


CC:DA Update on the Full Aggregates Working Group (AWG) Model for Aggregates



**Committee on Cataloging:
Description & Access
2017 Midwinter Meeting
January 23, 2017**

Deborah Fritz, TMQ
deborah@marcofquality.com

CC:DA Update on the Full Aggregates Working Group (AWG) Model for Aggregates

- AWG is currently composed of 8 members from the U.S., France, UK, NZ, and Australia
- Remember that an aggregate manifestation embodies multiple distinct expressions of one or more works

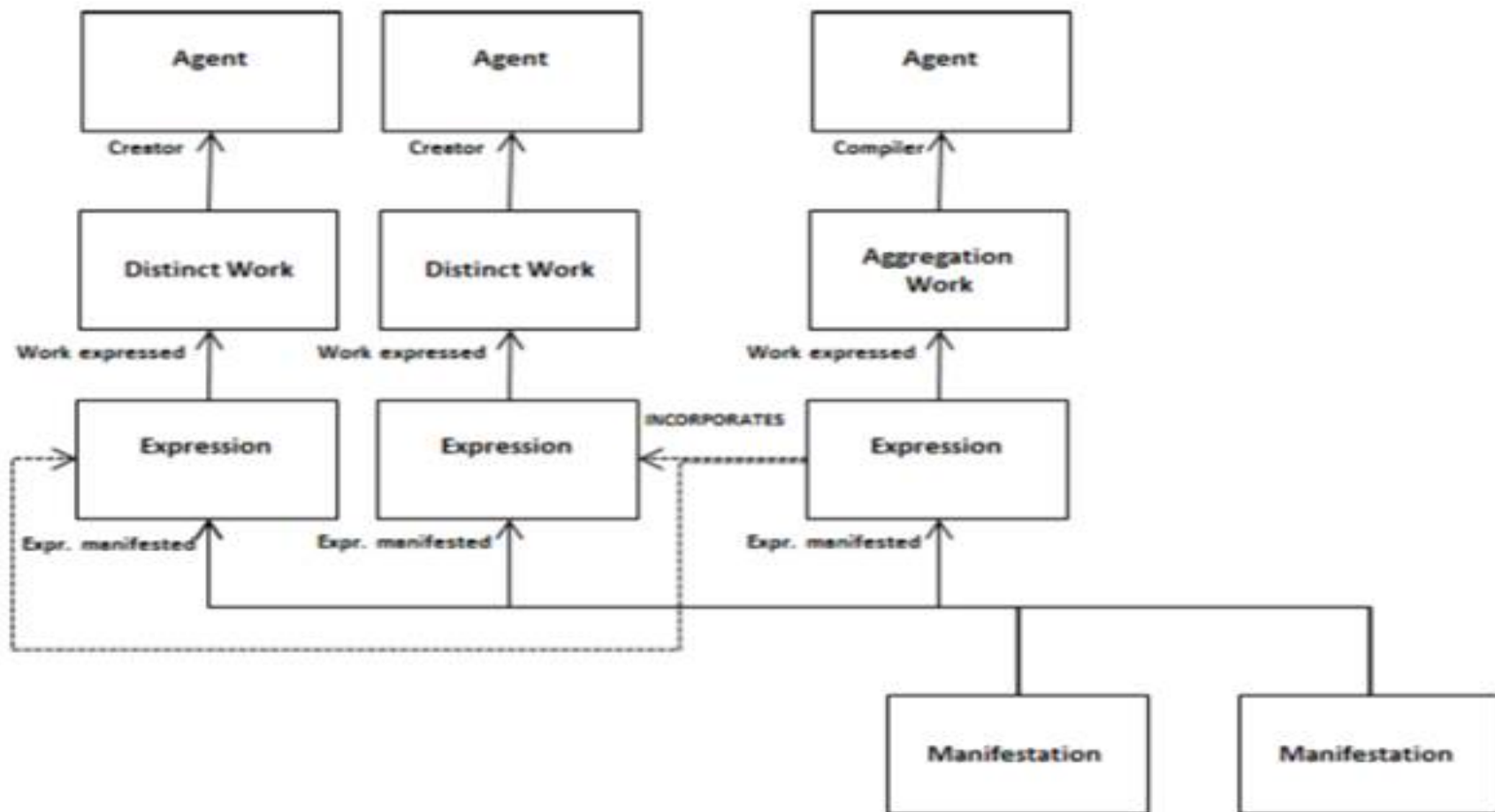


Figure 1: The full AWG model for aggregates

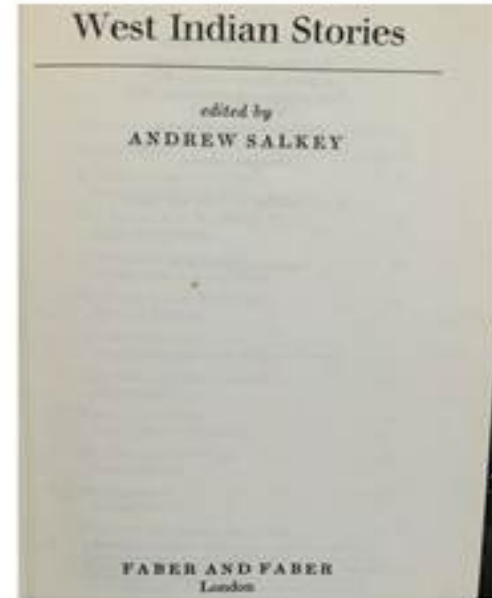
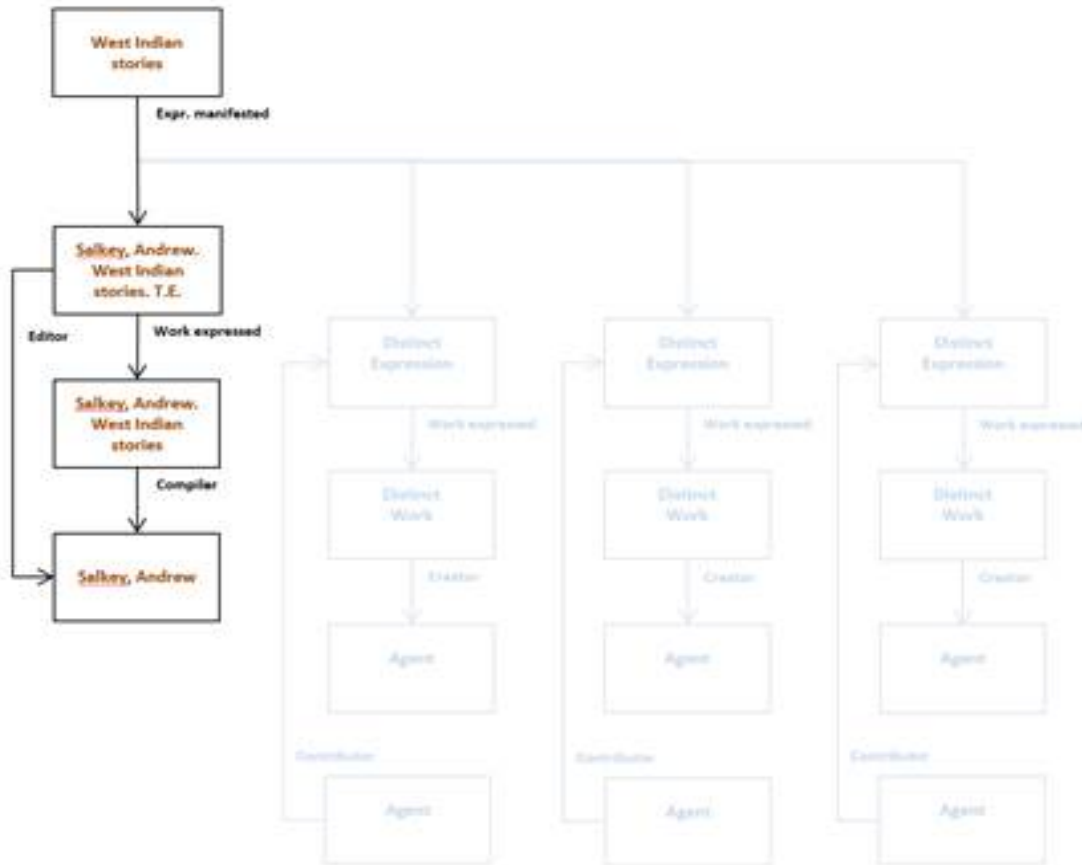
(from: <http://www.rda-rsc.org/RSC/AggregatesWG/1>)

You can describe an aggregate at the level that you choose:

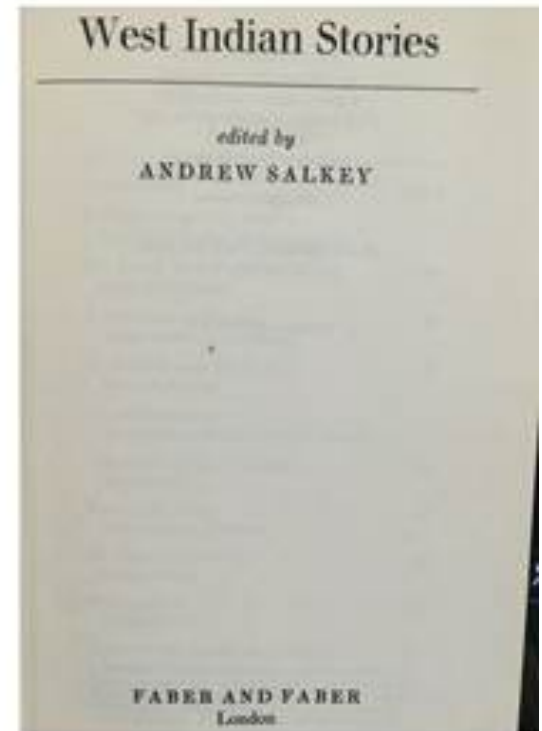
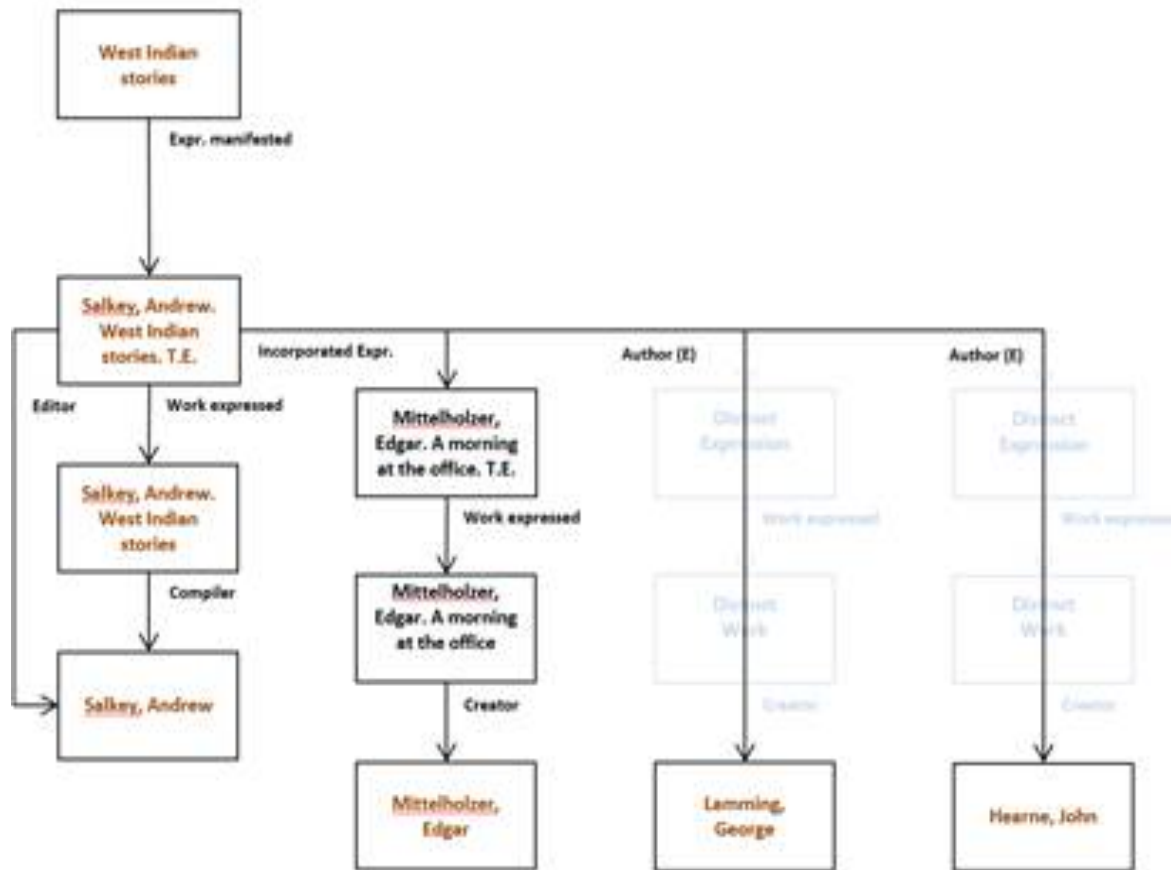
- Aggregation Work/Expression
- Distinct Work/Expression (one or more)
- Both

These two diagrams are from an internal AWG document:

Aggregation Work: Aggregation Only



Aggregation Work: Aggregation + Distinct Works



Etc.

- You can describe every distinct Work/Expression in an aggregation, or you can describe only one or two of them; or you can use shortcuts, as explained in our paper
- LRM has a distinction between whole/part and aggregates, but the AWG is still trying to come up with a clear definition of the difference.
- We have begun working on applying the model to serials, and are definitely planning on applying the model to music and motion pictures, as soon as we can
- It is all about relationships